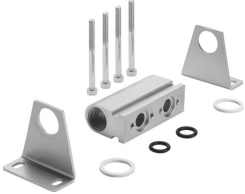


Common supply manifold PAL-3/8-2-B

Part number: 30692

FESTO



Data sheet

Feature	Value
Type code	PAL
Mounting position	Any
Max. no. of valve positions	2
Product weight	510 g
Type of mounting	With mounting bracket
Pneumatic connection 1	G3/4
Note on materials	RoHS-compliant
Material of sub-base	Aluminum Anodized